

# READY STEADY TOKYO Test Events

## SAILING

### READY STEADY TOKYO – Sailing 15-22 August 2019

#### [DP] Competition Area Regulations Amendment 1 marked in blue

#### 1. General requirements

- 1.1 These Competition Area Regulations (CAR) shall apply from 15-22 August 2019.
- 1.2 They apply to all accredited personnel, including athletes, support persons, race officials, media representatives.
- 1.3 The Ready Steady Tokyo Sailing Instructions (SIs) and supporting documents on penalties clarify the CAR obligations where penalties will be applied. These are referenced by [SP] (standard penalty) or [DP] (discretionary penalty) in this document.
- 1.4 All Ready Steady Tokyo boats and vessels shall remain within the Field of Play whilst on the water during the period from 15 August to 22 August 2019 inclusive. No part of any boat shall cross the boundary of the Field of Play. [SP][DP]
- 1.5 Once launched, Support Boats shall not enter the area bound by the central promenade, breakwater, launching ramps and the crane dock as shown in Addendum B until after the last medal ceremony has concluded, except for emergencies.
- 1.6 When transiting across the Field of Play, all Ready Steady Tokyo boats and vessels shall follow the applicable route as shown in Addendum A. When transiting between the fixed nets, all Ready Steady Tokyo boats and vessels shall pass between the gates formed by the blue conical buoys.

#### 2. Field of Play definition

- 2.1 The diagram in Addendum A illustrates the Field of Play.
- 2.2 The Race Areas within the Field of Play are also shown in Addendum A.
- 2.4 The outside boundary of the Field of Play is defined by the blue line in Addendum A.
- 2.5 The fishing nets shown on Addendum A as dotted red lines are prohibited areas. Blue conical buoys may be laid to assist identifying the prohibited areas.

#### 3. Field of Play – restrictions during competition (17 – 22 August)

- 3.1 The Field of Play Security Plan will be tested on nominated days. On these days only registered athlete boats, support vessels, race official vessels and accredited personnel are allowed in the Field of Play. Announcements will be made about these days at the morning team leaders meeting.
- 3.2 [DP][SP] On these testing days, if any part of a boat crosses the Field of Play boundary, it will be deemed to have left the exclusion zone and both the boat and anyone on board may be subject to security quarantine and search before being permitted back into the Venue.

#### 4. Field of Play – restrictions during pre-competition training (15 July to 16 August 2019)

- 4.1 The Field of Play will not be closed to non-accredited traffic in this period.
- 4.2 All accredited athletes going afloat shall display bow numbers on both sides of the hull. These will be supplied and applied by the Organising Authority.
- 4.3 All accredited support vessels shall display their National Olympic Committee (NOC) code and allocated numbers as set out in the Support Team Regulations (STR).

#### 5. Security awareness

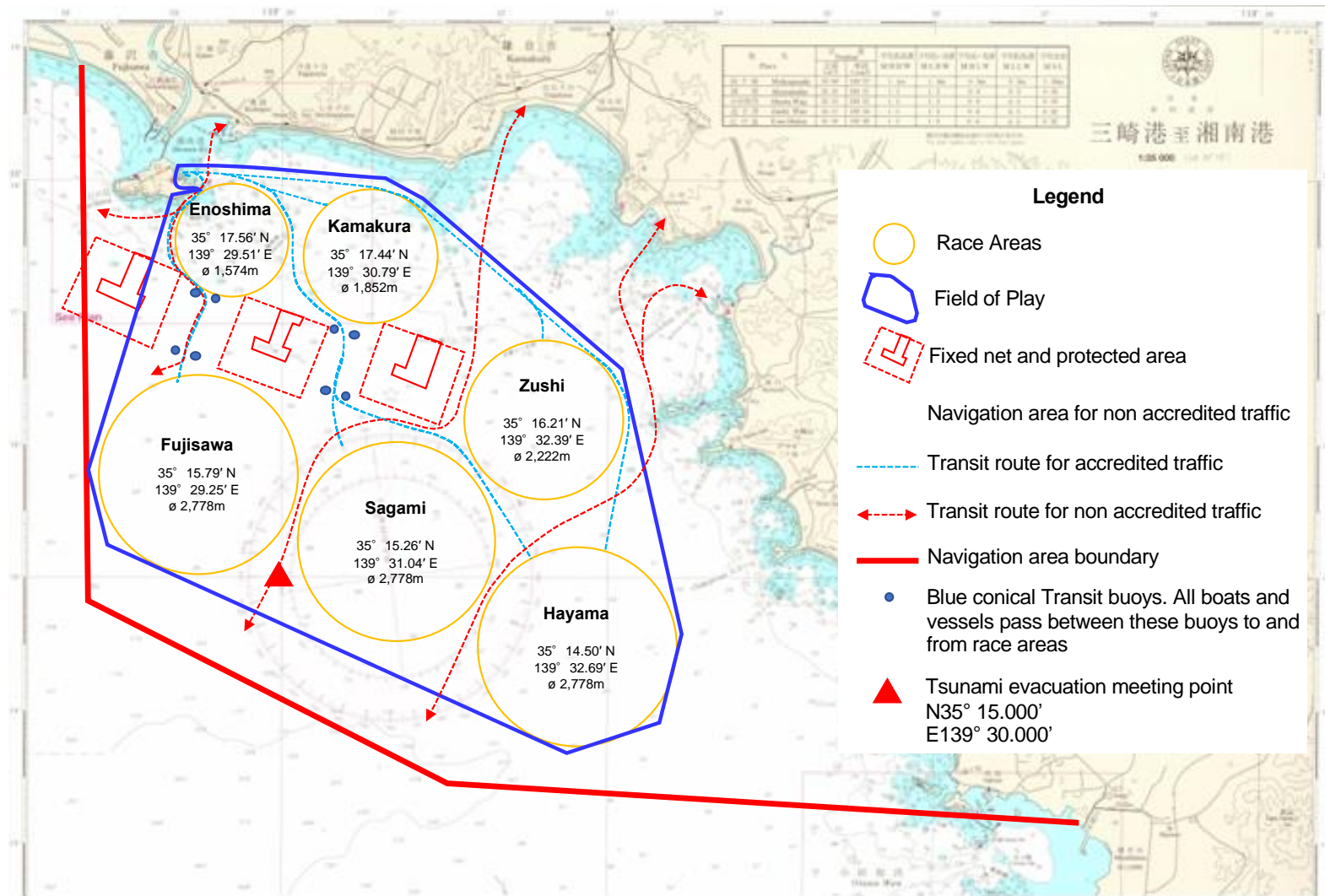
- 5.1 All boats have a security responsibility. In the event of observing anything suspicious, particularly an incursion into the Field of Play by a non-accredited vessel or person on competition days,

immediately notify The Bridge either directly (VHF channel 88) or through a nearby race management boat.

5.2 The report should cover where possible:

- a brief description of the potential threat;
- the location where it has been observed;
- if the object is moving, the direction and speed of travel; and
- any other material information.

## CAR Addendum A Field of Play and Race Areas



海上保安庁発行の水路図誌を使用しています。 This is a reproduction of a nautical chart published by Japan Coast Guard.

CAR Addendum B  
Support Boat Prohibited Zone

